



## Glebe Street, London, W4 2BD

A beautifully presented four bedroomed family house located in Chiswick's extremely popular "Glebe Estate" area just a short walk from the high street with its array of boutique shops and restaurants. Accommodation provides: large open plan living area with wood flooring, beautiful extended kitchen, living and dining area with tiled flooring, four bedrooms and further bedroom/study, luxury family bathroom & further shower room, fitted wardrobes in main bedrooms, ground floor cloakroom, landscaped front & rear gardens and gas fired central heating. Local transport links include both Turnham Green & Chiswick park tube stations, numerous local bus routes and convenient access via A4/M4 to Central London, Heathrow & The West. EPC - E. Hounslow Council Tax Band G. The property is available from the end of February 2026 and is offered unfurnished

- Lovely central 'Glebe Street' Location
- Great for transport links & amenities
- Designer open plan living areas
- Beautiful kitchen/Dining/Living room
- Four bedrooms & further study room
- Family bathroom & further shower room
- Ground floor cloakroom
- Landscaped front and rear gardens
- Available from the end of February 2026
- Long let - Unfurnished

**£6,300 Per Calendar Month**

## Glebe Street, W4

Approximate gross internal area

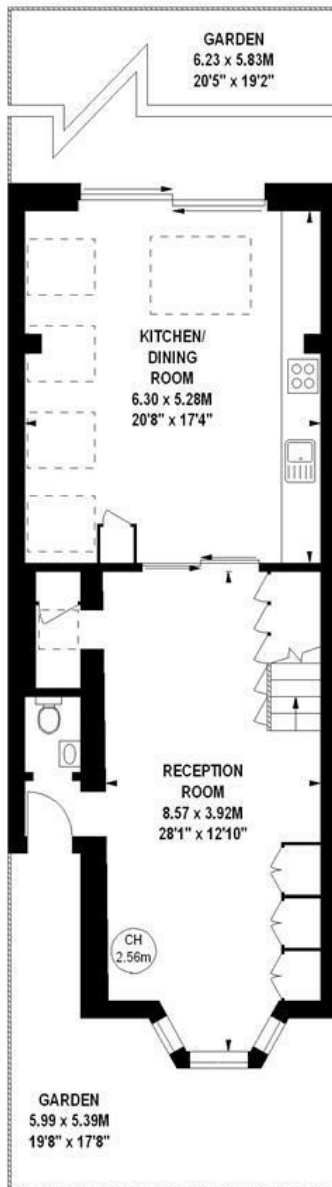
160.53 sq m / 1728 sq ft

(Including Eaves Storage)

Eaves Storage

5.20 sq m / 56 sq ft

Key :  
CH - Ceiling Height



784 sq ft  
**Ground Floor**



487 sq ft  
**First Floor**

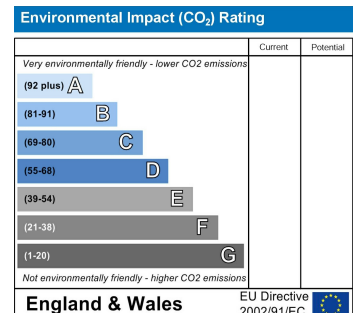
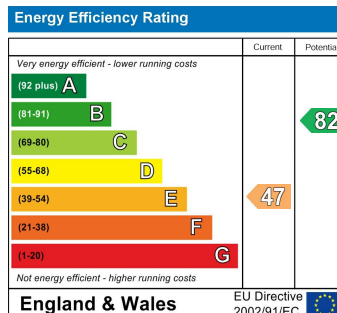


401 sq ft  
**Second Floor**

The floor plan is not to scale and measurements and areas shown are approximate and therefore should be used for illustrative purposes only. The plan has been prepared in accordance with the RICS code of Measuring Practice and whilst we have confidence in the information produced, it must not be relied on.

If there is any aspect of particular importance, you should carry out or commission your own inspection of the property.

Copyright of FeaturePRO.



5-7 Turnham Green Terrace, Chiswick, London, W4 1RG

Tel 020 8747 8800

E-mail [lettings@whitmanandco.com](mailto:lettings@whitmanandco.com)

Website [www.whitmanandco.com](http://www.whitmanandco.com)

PrimeLocation.com

zoopla.co.uk

rightmove

onTheMarket.com

MISREPRESENTATION ACT 1967

Whitman & Co. for themselves and for the vendors give notice that these particulars do not constitute any part of, an offer of contract. All statements contained in these particulars are made without responsibility on the part of Whitman & Co. or the vendor. None of the statements contained in these particulars is to be relied upon as statements or representations of facts. Any intending purchaser must satisfy himself by inspection or otherwise as to the correctness of each of the statements contained in these particulars. The vendor does not make or give, and neither Whitman & Co. or any person in their employment has any authority to make or give, any representation or warranty whatever in relation to the property.